



# Rainbows Nursery

Greasley Beauvale Primary  
& Nursery School

**Enquire Now**

**Handbook 2026**

[www.GreasleyBeauvale.co.uk](http://www.GreasleyBeauvale.co.uk)

# Headteacher's Welcome

*Mrs Michelle Bates*



Head Teacher Michelle Bates (Right) and School Governor Paul Day (Left) taken at Greasley Community Quiz Night 2024

Hello and welcome to Rainbows Nursery here at Greasley Beauvale Primary School. It gives me great pleasure to introduce our new setting to you, since lowering our age range to 3. This has been a great journey for us so far, and we very much look forward to you all visiting, applying and starting with us as your child turns 3. We are a happy, hard-working and driven school, where we value teamwork from all involved within the school and across the community. This includes children, parents, staff and governors working together to make sure that our school remains the best it can possibly be, at all times, and never stands still.

***"At Greasley Beauvale, we pride ourselves on delivering a high-quality curriculum, where our children can grow and develop academically, socially and emotionally" ”***

At Greasley Beauvale, we pride ourselves on delivering a high-quality curriculum, where our children can grow and develop (not only academically, but socially and emotionally too). We put this down to our friendly, enthusiastic and caring ethos, where we value developing the whole child. Our aim is to develop a passion for learning in our children and now that we have lowered our age range, this can start from nursery age. This means that we can prepare our children, even younger now, for the next stages of their education. For your child joining our nursery, this would mean getting them ready for Reception and beyond as they transition through their primary years.

We feel so excited and privileged that you are considering our new nursery, or have already chosen us to support you with your child's first formal steps in their education and learning journey.

Nevertheless, why go the extra mile and choose us?

Why decide on Rainbows Nursery here at Greasley Beauvale Primary School?

## **What we have on offer:**

- *Be led and managed by a committed and driven senior management and leadership team (including Governors, the School Business Manager and EYFS lead)*
- *Ensure that children are exposed to a high-quality curriculum (including phonics) and receive first-quality teaching*
- *Be led by a qualified teacher who will work with the EYFS team and be part of the school and the whole-staff team*
- *A setting supported by well-qualified and experienced Learning Support Assistants (LSA) in the field of the Early Years Foundation Stage (EYFS)*
- *Be fully inclusive and well-supported by the expertise of our SENDCo;*
  - *Accommodated within a purpose-built classroom, which is part of the main school*



## What we have on offer:

- *Work with the Foundation Lead within the school to ensure teaching and learning links in with a smooth and seamless transition to school*
- *Access to the full EYFS curriculum and phonics ( Little Wandle)*
- *Age-appropriate outdoor play area, with new equipment, access to the Reception area and grounds well-equipped for the Early Years age group*
- *Access to all the wider school equipment and facilities (e.g. interactive whiteboards, large school hall, sensory room and shed, library, dinner hall, multi-use games area (MUGA), musical equipment, developing sensory garden and nurture room)*
- *Opportunities to be part of main school events and celebrations (e.g. Rainbow Rewards, fundraising events, concerts trips and overall enhancement to the curriculum)*
  - *An education at a well-respected school that is well-known for its focus on nurture, pastoral provision, mental health and wellbeing, support for children with Special Educational Needs and Disabilities (SEND) and a continual drive to keep up to speed with research and ideas for school improvement*
- *Fully funded places of 15 and 30 hours, with the option to pay for additional sessions and lunch*
- *An optional (chargeable) hot and healthy school meal at lunchtime*
- *A smooth and seamless transition into Reception and main school (subject to being offered a place through the schools admissions process)*
  - *Provided continuous education from 3-11 years (subject to accepted application for a reception place)*
- *Opportunities to be part of whole-school projects and developments, including Thinking Schools and OPAL playtimes*
  - *Access to our school Wraparound Care services (Ace Sports Coaching) providing childcare from 7:30am – 6:00pm*
- *Ensure that there are good links with the community and stakeholder*

We have a range of options to suit differing needs, and hours, as your child starts Greasley Beauvale Primary and Nursery School. Consequently, all funding can be used in one place. Please feel free to view our new website pages and see our Rainbows Nursery Admissions page, forms and booking options. You can apply for a nursery place by completing and returning an application form to our school office. Our Admission Policy also details how places are allocated and how the admission criteria is managed.

We hope you enjoy looking at our website and new nursery pages. However, a website can never provide all the answers or replace an actual visit or discussion! If you are a prospective parent, who thinks your child could benefit from the rich and varied opportunities at Greasley, we would be delighted to show you around so please contact the office to make an appointment.

I feel very lucky to be part of such a hardworking and committed team, who strive to provide an enriched, challenging and exciting education for all children. We look forward to meeting you and yours and are excited about the future of our school and members of the community attached to it.

Please do get in touch if there is anything you wish to discuss or ask [head@greasley.notts.sch.uk](mailto:head@greasley.notts.sch.uk).  
We very much look forward to hearing from you.

*Warm wishes,*  
**Mrs Michelle Bates** Head Teacher



## About Greasley Beauvale Primary & Nursery School

Greasley Beauvale amalgamated into a primary school in September 2008. We moved into the new build in September 2011, and the school continues to grow and develop year-on-year. Everyone at Greasley Beauvale works hard to ensure that the children in our care receive the best possible education that we can offer. We have a committed staff team and varying leaders who have a range of roles and responsibilities to ensure that the school continues to go from strength to strength.

We are lucky with the grounds and space at Greasley Beauvale Primary School and have purpose-built equipment and areas to keep the children active and engaged. This includes access to the Greasley Sports Centre Multi-Use Games Area (MUGA), which we are fortunate enough to use during the school day (including breaks and lunchtimes). Our grounds have plenty of space for outside learning and play. This includes a wildlife area, greenhouse, trim trails, hills and castles, and a developing sensory garden.

Our aim is for children to have the best possible start at Greasley Beauvale, ready for a lifelong love of learning in a warm and welcoming environment.

### Our Vision



At Greasley Beauvale Primary School, our vision is for everyone to **reach their true potential**, nurture their talents and foster a personal **love of learning** through a **safe, engaging and challenging curriculum**. **We take notice of each other** and **strive to be healthy and happy in body and mind**. **We champion physical, emotional and mental wellbeing** to **promote the best outcomes for everyone** to **build a healthy future together**.

The whole-school community shares our vision, and we are proud of our school. We fully understand the potential impact of COVID-19 and appreciate the importance of physical health and wellbeing support needed as we readjust.

### Our Aims

- To be **lifelong learners**, who are **motivated** to be **independent, confident** and **responsible** global citizens
- To set ourselves **high aspirations** and **strive for excellence** so that we can be the very best we can be
- To **learn together** in an environment where **mental health and wellbeing is embedded** in the culture
- To **take care of others, and ourselves** being **healthy in body, open in heart and happy in mind**
- To be **forward thinking**, embrace **creativity** and nurture **curiosity** about the world
- To **take risks** in our learning and **challenge ourselves** in our journey to **reach our full potential**
- To be **resilient** and **unafraid of failure**
- To develop our **social skills** in order to become **effective communicators** and **build relationships**
- To be **nurturing, kind and caring; understanding when to be supportive** to others
- To be truly **respectful and empathetic**, allowing us to embrace **individuality**



## Our Rainbow Values

**Respect & Acceptance** "Being ready, respectful and safe in everything we do"

**Active Body & Active Mind** "Take ownership over your physical and mental wellbeing"

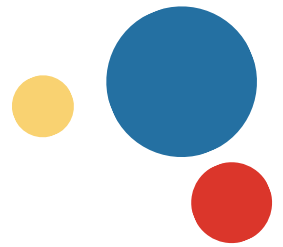
**Inclusive Yet Individual** "Embrace diversity and be proud of who you are"

**Nurture, Develop & Grow** "Persevere and take risks with your talents and potential"

**Believe In Yourself** "Be confident in your choices"

**Overcome Your Obstacles** "Be brave, show resilience and challenge yourself"

**Wonder & Curiosity** "Ask questions and seek answers"



## Our Current Nursery Team



### Nursery Teacher

**Mrs Pamela Barrowcliffe**

### Support Assistants:

**Mrs Daniella Jameson**

**Mrs Katie Lowe**

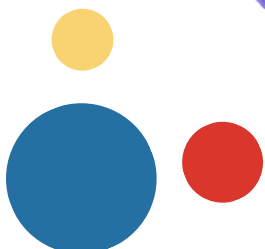
**Mrs Aimee Henaghan (Tues, Weds, Fri)**

**Mrs Jade Butler (Mon & Thurs)**

### Lunchtime Team

**Mrs Rudo Oxley**

**Miss Victoria Parker**



## TERM TIME BEGINS

**APR 13** TERM BEGINS  
SUMMER 2026

**SEP 02** TERM BEGINS  
AUTUMN 2026

**JAN 04** TERM BEGINS  
SPRING 2027

**APR 12** TERM BEGINS  
SUMMER 2027

These dates are subject to change due to inset days. The dates for the 2026/27 inset days will be decided during the Summer 2026 term

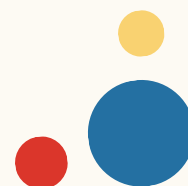
## Nursery Day and Session Times

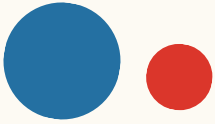
A day in our nursery really helps to develop a sense of routine, to grow social skills and learn through a variety of play-based activities. To do this, our morning and afternoon sessions are structured in exactly the same way.

Our morning nursery sessions starts at 8:45am and finishes at 11:45am. Afternoon nursery session starts at 12:15pm and finishes at 3:15pm. Lunch Club runs between 11:45am and 12:15pm.

The following is an example of a typical nursery day:

MORNING SESSION	AFTERNOON SESSION	ACTIVITY
08:45 AM	12:15 PM	Welcome and register. Children will be encouraged to find their name and put it on the board to say they are present.
08:55 AM	12:25 PM	Wiggle and Jiggle/ time to share
09:05 AM	12:35 PM	Child initiated play in the indoor and outdoor classroom. During this time children may join in with the following small teacher led groups: <ul style="list-style-type: none"><li>• Talk time</li><li>• Phonics</li><li>• Maths</li></ul>
10:15 AM	1:45 PM	Snack and milk time
10:30 AM	2:00 PM	Whole class session: story time, topic learning, group activities.
10:45 AM	2:15 PM	Child initiated play in the indoor and outdoor classroom. During this time children may join in with the following small teacher led groups: <ul style="list-style-type: none"><li>• Talk time</li><li>• Phonics</li><li>• Maths</li></ul>
11:30 AM	3:00 PM	Song/Story time
11:45 AM	3:15 PM	End of session (Meet/Handover)





There will also be a weekly wellie walk and dough disco takes place three times a week to help with fine motor skills.



Please try to arrive to and from sessions on time and let us know who will be collecting them each day. Children attending Ace Wraparound Care sessions will use the Rainbow Den (near the school main office) and the hall using these before and after school childcare sessions.

If there are last minute changes or unexpected delays, please telephone the school office as staff will not get chance during the school day to check.

## Where to come



Please bring your child to the nursery doors, accessed through the nursery playground. You can access the playground using the normal school entrances at the start and end of the day.

If your child is joining or leaving us at lunchtime, please use the second green gate down from the main entrance. Someone will be there to let you in at the correct time.



## Lunch Club

Lunchtime is between 11.45am – 12.15pm. The children have lunch in the school hall, and this will include some time with our younger children from Reception and Key Stage One. If you are dropping off at 11:30am or collecting at 12:15pm please do so from the nursery entrance which is the small green gate just past the main entrance.

Please note that lunch club costs £3.50 per day for your child to be supervised whilst eating their lunch and then playing. If you wish your child to have a hot lunch provided by school then an additional charge of £3.16 per day, which can be made via your child's ParentMail account. This is our online payment facility for which you will be sent log in details as your child joins us.

Please send water in your child's water bottle, not juice. Milk can be ordered for your child if you register with Cool Milk.



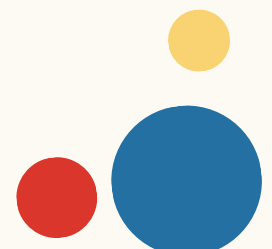
## Uniform



Children in the Rainbows Nursery will wear the same uniform as the rest of the children across school. Details of the uniform can be found on the school website.

Alternatively, school uniform can be purchased directly from our suppliers, Loop Wear, by [clicking here](#).

As most of our communications are online, and nursery children do not take reading books home, your child will not require a book bag for nursery.





## Getting Ready for Nursery

At nursery, we understand that your child is very precious to you and they are still very young. However, if they can develop some independent skills before starting, this will make their nursery life much easier and more enjoyable. There are lots of things you can do at home to get your child ready to start in our nursery.

### Toilets

We would really like it if your child is out of nappies, and can go to the toilet by themselves, by the time that they start nursery. This includes wiping their own bottoms and remembering to wash their hands with soap when they have finished. However, if this is an issue then speak to us and we can share and devise intimate care plans with you and consider how this will work for you, nursery and your child.

Please ensure that your child has a spare set of clothes to keep at school. (In a named carrier bag) in case of any accidents. If your child needs some help in the toilets, we will help.

Please speak to one of the nursery staff if your child does have any toileting issues, or needs to be reminded to go. If your child is struggling with toilet training, please speak to one of us or your Health Visitor for advice.

### What to Bring to Nursery

- Spare set of clothes.
- Water bottle, filled with water, and named. It is really important that all children bring a water bottle every day. Children are encouraged to drink water regularly throughout the day to keep them hydrated.
- Coat, waterproof and named.
- Hat, gloves etc in winter, named.
- Sunhat in the summer, named. (Please apply long lasting sun cream onto your child before the nursery session).
- Wellington boots (to be left at school if possible), named.
- If your child will require nappy changes, nappies, wipes and bags.

### Personal and Social Skills

- Encourage them to become more independent by putting on their own coat and shoes, even if this takes a little time.
- Ask them to help you with some jobs around the house like clearing away their toys.
- Encourage them to take responsibility for their own things.
- Encourage them to go to the toilet by themselves and to wash and dry their hands.
- Teach them to blow their own nose with a tissue and to put the tissue straight into the bin.

### Learning Skills

- Talk to your child and encourage them to take turns in conversations and to listen.
- Encourage them to recognise their own name written with a capital letter for the first letter only and then lowercase letters for the others.
- Share books with your child and encourage them to join in or retell the story in their own words.
- Count toys or objects and look for numbers in the environment.
- Sing songs and counting or nursery rhymes.

### Milk and Fruit

- The children have milk and fruit during snack time. Milk is available for all children (under 5's free). To register your child to receive milk visit [www.coolmilk.com](http://www.coolmilk.com) or complete a form available from the school office.
- One piece of fruit is available to all children each day. This may be an apple, banana, pear, tomato, carrot, orange or strawberries.

### Medicines

Children who use inhalers or need an epipen should give a clearly named spare one to their teacher to be kept in the classroom.

Medicines should be taken to the school office in the original container and a form giving permission to administer the medication completed. You will need to give clear details regarding your child's name, dosage, time etc.



## The Early Years Foundation Stage Curriculum

The Foundation Stage Curriculum is for all children from birth to the end of their Reception year. The curriculum is play based and the children have opportunities to learn through focused activities with an adult and through their own exploration. We provide learning opportunities for all areas of development both indoors and outdoors.

There are seven areas of development as follows:

### The Prime Areas

- Personal, Social and Emotional Development – Self Regulation, Managing Self, Building Relationships
- Communication and Language – Listening, Attention and Understanding, Speaking
- Physical Development – Gross Motor skills, Fine Motor skills

### The Specific Areas

- Literacy – Comprehension, Word Reading, Writing
- Mathematics – Number, Numerical Patterns
- Understanding the World – Past and Present, People and Communities, The Natural World
- Expressive Arts and Design – Creating with Materials, Being Imaginative and Expressive

We plan topic-based activities and will update the nursery page on the school website, and weekly Weduc posts, to explain about our current topic. Weekly talk tasks help explain our weekly planning and what you can do at home to support your child. These can also be found on the nursery webpage. From time to time we plan some joint activities with Reception. You will be informed by email or notices on the weekly school bulletin email.

After your child has been at nursery for a few weeks you will be invited into school for a curriculum meeting. At this meeting you will be able to find out more about the curriculum and will be given information about supporting your child's learning at home.



### Celebrating Children's Achievements

At nursery, we celebrate all children's achievements. If your child receives a certificate or medal outside nursery, they can bring it in to share with the other children during 'time to share.'

There will be two parents' evenings throughout the year, an open afternoon in the summer and opportunities for you to discuss your child's achievements and targets throughout the year. In the summer term, we will also send home a written report of your child's progress at nursery.





## Our Whole School Approach

At Greasley Beauvale Primary and Nursery School, we take a 'whole school approach' to the needs, health and wellbeing of all at Greasley Beauvale.

Our commitment and more details in relation to any of the following are available in more detail on our school website and included in the wider school prospectus. You can find this by [clicking here](#).

**Special Educational Needs and Disabilities (SEND)**

**Inclusion**

**Behaviour**

**Mental Health, Wellbeing and Pastoral Support**

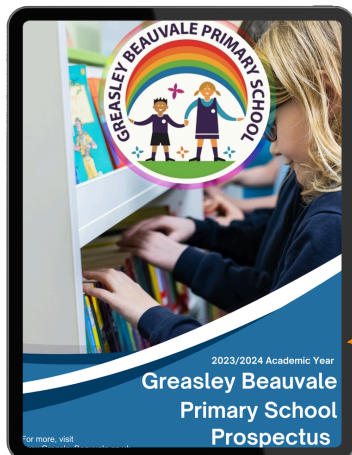
**School Rules**



Also included in our prospectus and in further details online is our commitment to being a 'Thinking School' with Thinking Matters and our participation in the OPAL Primary Programme.

A 'Thinking School' focuses on explicit teaching of fundamental cognitive processes and uses a common language of thinking, which leads to a better understanding and effective construction of knowledge for our pupils.

Alongside this, the OPAL (Outdoor Play and Learning) Primary Programme aims to develop outdoor play and learning across the whole school to ensure that amazing play takes place every day and for every child.



**Check out our full prospectus for more!**

## Safeguarding, Child Protection and Early Help

At Greasley Beauvale Primary School, the health and safety, wellbeing and personal development of every child is our top priority. Child protection is part of the safeguarding duty and includes promoting positive welfare and safety. It refers to the activity that is undertaken to protect children from any type of harm (both within the school grounds and ensuring that children are safe at home). We expect all staff, governors, supply staff and volunteers to share this commitment in line with school policy, and we believe that our safeguarding measures are effective and robust.

We listen to our children and take pupil voice (e.g. what they tell us) seriously. All school staff are trained in child protection, and children are made aware of the adults they can talk to if they have any concerns. Staff are trained to look out for the signs of abuse, neglect or harm, and are required to report these to the Designated Safeguarding Lead (DSL) or members of the safeguarding team.

Greasley Beauvale Primary School recognises that providing "Early Help" is more effective in promoting the welfare of children than reacting later. Early Help means exactly that - providing support as soon as a problem emerges, at any point in a child's life. The staff work hard where early help is required and use the Early Help Assessment Form (EHAF) for support where necessary and when parents and carers consent.

When there are concerns about a child's welfare, we may need to sometimes share information and work in partnership with other agencies. We will ensure that our concerns about children are discussed with parents and carers first, unless we have reason to believe that such a move would be contrary to the child's welfare.

Everyone within the Greasley community have equal rights to support, protection and professional respect irrespective of their protected characteristics.



## Wraparound Care

TB Sport provide the wraparound care at Greasley Beauvale Primary and Nursery School for children from Nursery to Year 6. They run a breakfast club from 7:30am and after-school provision until 6pm.

### Breakfast Club:

Children enjoy a calm, secure start to the day with a self-serve nutritious breakfast (7:45-8:15am) that encourages independence and social interaction. Activities include reading, quiet play, staff-led sessions, and a group time to prepare for learning.

### After-School Provision:

Children have a warm, enjoyable space to relax, play, and connect. Activities include arts and crafts, science and nature, baking, and sports, with themes that rotate each half term. Snacks include toast, soups, toasties, sandwiches, wraps, beans or spaghetti on toast, fruit, veg, water, and juice.

To register and to book please use the following links: - [Log In - TB Sport \(magicbooking.co.uk\)](https://magicbooking.co.uk)

Please contact the school office for up-to-date prices.



## Absence and Holidays

Please contact the school office first thing on the morning of your child's first day of absence and each subsequent day of absence.

If your child's attendance and/or punctuality causes a level of concern for us, we will ask you to come into nursery and discuss this with us. If there is no improvement after an agreed period, your child may be at risk of losing their place at nursery.

If you are going on holiday during term time, a holiday request form must be completed. These are available from the school office. Please be aware that absences may not be authorised for older siblings attending our school, in line with Government regulations.



## Admissions and Moving to Reception

When your child is in their final term at our nursery, we will begin to prepare them for moving to their reception class.

**Please remember that you must apply for a school place through your local council. Attending our nursery does not automatically guarantee your child a place in our school.**

For children who have been successful in their application for Greasley Beauvale Primary School, we will make close links with the Reception classes in order to help them with this transition. In the summer term, the children will have opportunities to work with the reception children as part of their transition. They will also be able to spend time in the Reception Unit and meet their new teachers.

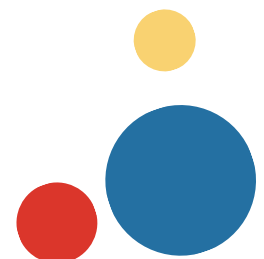
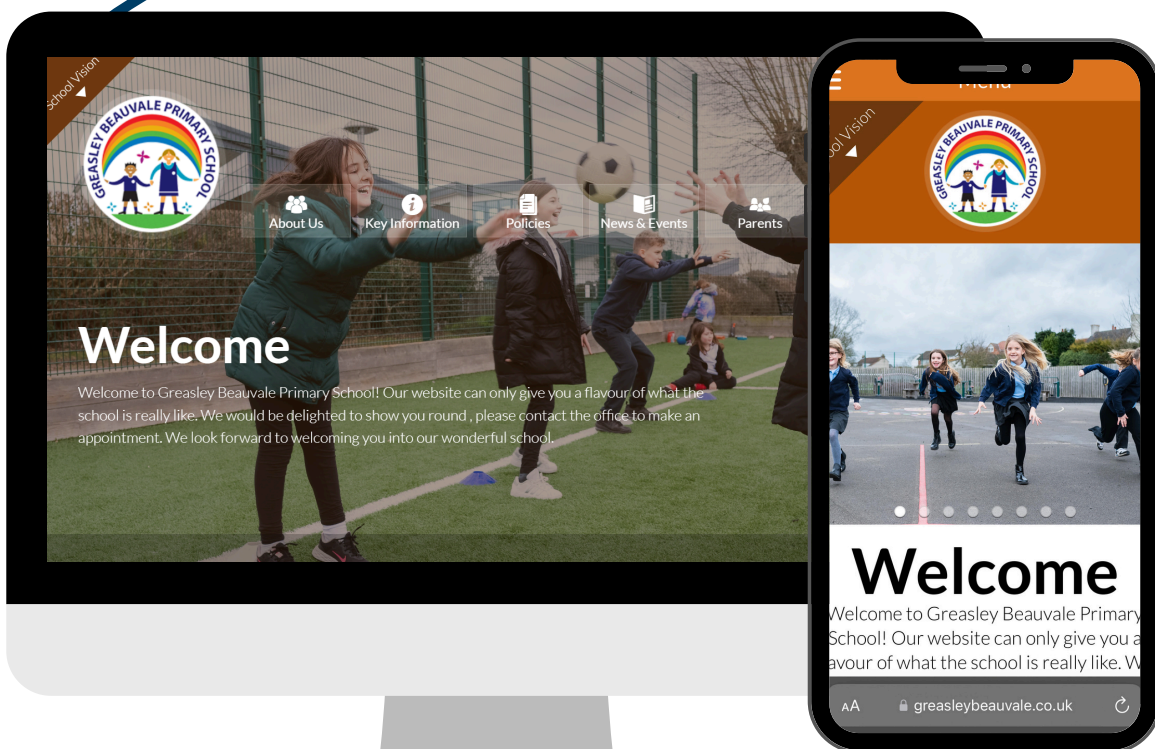
Children who are not moving into Reception at Greasley will be able to liaise with their new schools for this transition to take place. A copy of your child's report and their nursery records will be sent to their new school.

For any further information about transition to Reception, the application process, or for more on admissions to Rainbows Nursery, please visit the following links;

[Admission to Rainbows Nursery](#)  
[Starting Reception](#)  
[Admissions at Greasley](#)



[www.GreasleyBeauvale.co.uk](http://www.GreasleyBeauvale.co.uk)



## Greasley Beauvale Primary and Nursery School

Contact details: 01773 712128

Head Teacher – Mrs Michelle Bates  
Email – [head@greasley.notts.sch.uk](mailto:head@greasley.notts.sch.uk)

School Business Manager –  
Mrs Emma Poxon

Email: [office@greasley.notts.sch.uk](mailto:office@greasley.notts.sch.uk)  
Telephone: 01773 712128



### Disclaimer

The information given in this prospectus is valid at the time of production and is intended for use in relation to the 2024/2025 academic year. Information subject to change.

© Greasley Beauvale Primary 2024